

MAY 18 2018

Index No. G-15

CERTIFICATE OF LOCATION OF GOVERNMENT CORNER

CENTER Corner of Section 10, Township 108 N, Range 39 W

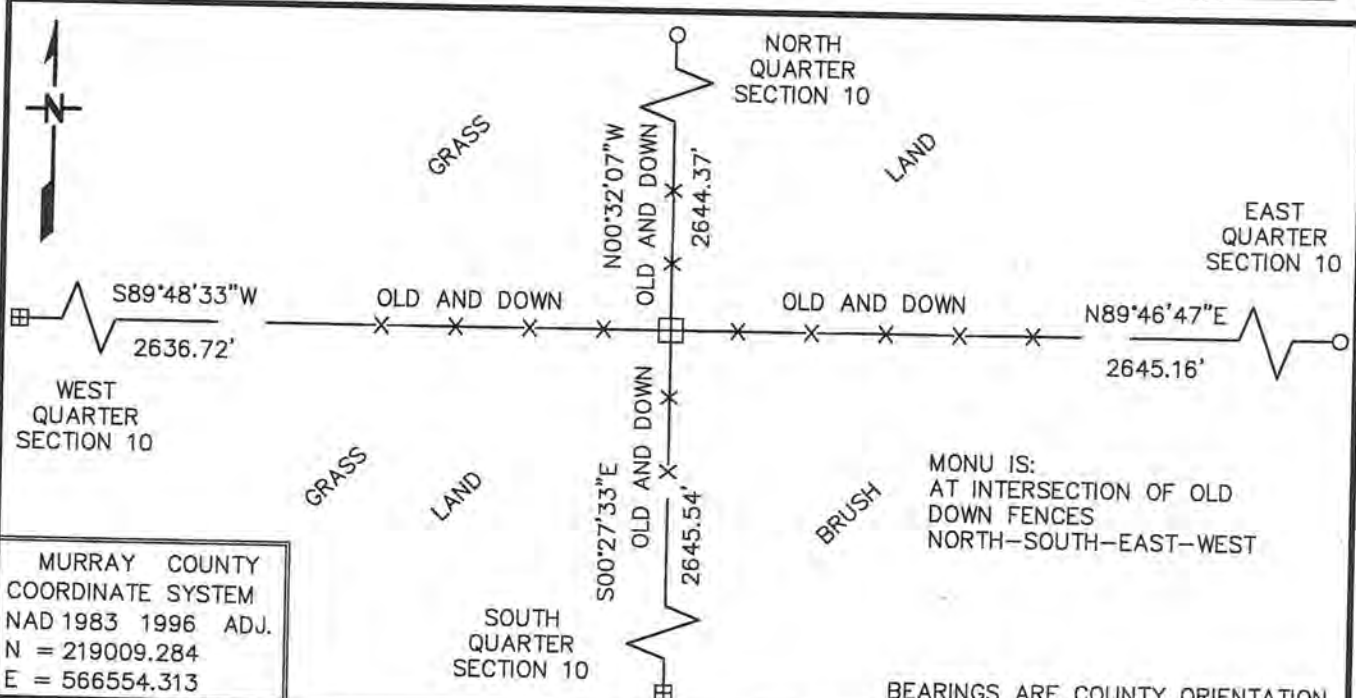
5TH Principal Meridian, State of Minnesota, County of MURRAY

At the corner location shown on the sketch:

On 10/18/2017 found a 10" DIAMETER, NEARLY CIRCULAR STONE, DOWN 0.4'

left monument as found, lowered monument, removed monument (explain)

On _____ Placed a _____



MURRAY COUNTY
 COORDINATE SYSTEM
 NAD 1983 1996 ADJ.
 N = 219009.284
 E = 566554.313

BEARINGS ARE COUNTY ORIENTATION

Statement of evidence for this corner location is on back of this page.

FEBRUARY 2018
WMA 02039

I hereby certify that this plan, specification, or report was prepared by me or under my direct supervision and that I am a duly Licensed Land Surveyor under the laws of the State of Minnesota.

SIGNATURE Bruce W. Shepperd
BRUCE W SHEPPERD

DATE 5/15/18

License Number 17003

Center of Section 10, Township 108 North, Range 39 West

The DNR Division of Lands and Minerals contacted the following for survey information:

Website - mngo.state.mn.us for GLO plat and field notes

Website - murray-countymn.com for section and quarter section corner information

Murray County Recorder's Office

Zieske Land Surveying, Inc. of Windom

Madsen Land Surveying, Inc. of Fairmont

Bonnema Runke Stern, Inc. of Willmar

THIS CORNER WAS NOT ESTABLISHED DURING THE U.S. GENERAL LAND OFFICE SURVEY OF THIS TOWNSHIP IN 1861.

1915 June 19, Surveyor's Record Book A, page 278 obtained from the Murray County Recorder's Office, which is also on murray-countymn.com contains a survey by J.R. Johnston, Murray County Surveyor. Survey states that the center of Section 10 was established at the intersection of the quarter lines. A stake was set to mark the location of the corner and was found to be:

2638.0 feet from the west quarter corner of Section 10

Distances to the other quarter corners are not given.

2017 October 18, the DNR Division of Lands and Minerals roved to the area of the corner with RTK GPS and found a 10 inch nearly circular stone, down 0.4 of a foot. The stone was found to be:

at the intersection of old down fences north-south-east-west

2636.72 feet from the west quarter corner of Section 10

0.68 of a foot south of a straight line from the $\frac{1}{4}$ corners east and west

1.76 feet east of a straight line from the $\frac{1}{4}$ corners north and south

Analysis of the above information led the DNR Division of Lands and Minerals to conclude that the found stone marks the location of the center of Section 10 as established in 1915 by J.R. Johnston, Murray County Surveyor, at the intersection of the $\frac{1}{4}$ lines.